

Using NCDRIVE – NX_inverter commissioning tool

Honeywell

Table of contents

1.	Using NCDRIVE - Hardware needed	3
2.	Using NCDRIVE - Software needed	4
3.	Connection with NCDRIVE	5
4.	Parameter settings with NCDRIVE	7
5.	Creating parameter files without inverter	8
6.	Comparing parameter settings	9
7.	Operating window	10
8.	Monitoring window	11
9.	Diagnostics window for troubleshooting	12
10.	Service info file	13

1. Using NCDRIVE - Hardware needed

- Adapter and cable for the connection between PC and the **NXL HVAC** (HVAC...) or **NXL Compact** (NXL...)
 - Adapter: **NXLPANRS**
 - Cables: **RS232C2M** (2 meters) and **RS232C-4M** (4 meters)
- For **NXS** (NXS...) products only the cable is required
 - Cables: **RS232C2M** (2 meters), **RS232C-4M** (4 meters) and **RS232C15.0M** (15 meters)
- PC with RS232 connection (most PCs have this as standard)
 - If no RS232 PC is available recommended USB-RS232 adapters from list below can be used
 1. Cables To Go (Ref# 26886)
 2. ATEN / UC-232A
 3. TITAN ELECTRONICS / USB-COM

2. Using NCDRIVE - Software needed

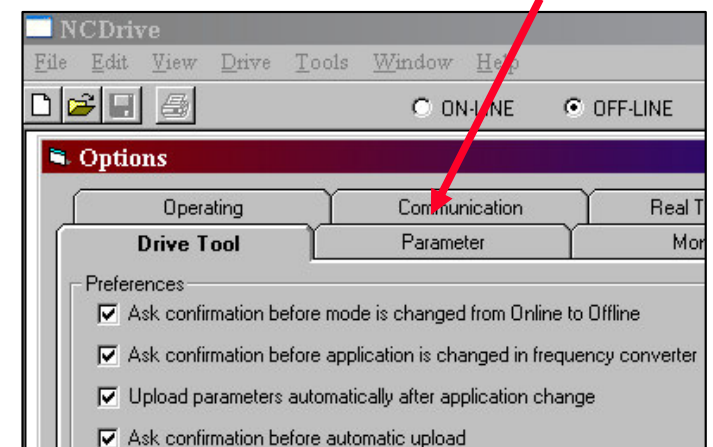
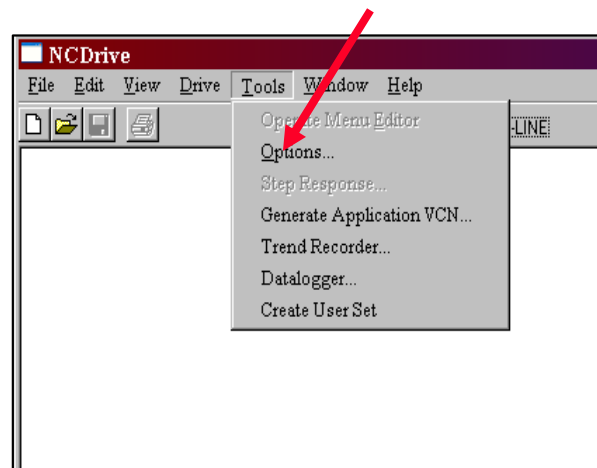
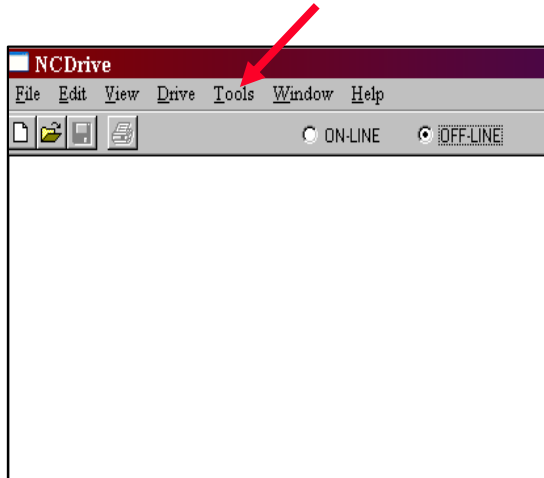
➤ Software downloading tool - NCDRIVE

Software can be downloaded from (download centre)

<http://inverter.ecc.emea.honeywell.com>

3. Connection with NCDRIVE

1. Install **NCDRIVE**
2. Connect the PC to the unit with RS232 cable
 - If using **NXL HVAC** or **NXL Compact** change the standard keypad to the adapter keypad **NXLPANRS** and then connect
 - In **NXS** remove the display and connect
3. Start **NCDRIVE** (the program is found under NCENGINE after installation)
 - If using USB - RS232 adapter “Com Port” settings might need changing. See below
 - in NCDRIVE with standard RS232 connection no settings needed



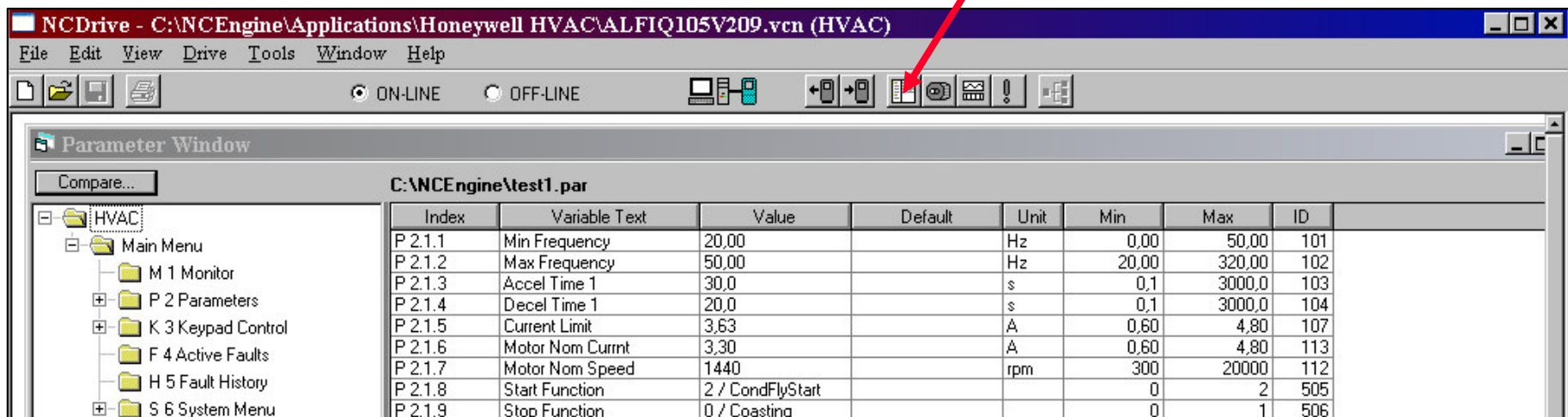
3. Connection with NCDRIVE

4. Connecting directly to the inverter – **ON-LINE mode**

- Choose ON-LINE from the top
- In case of communication failure check the connection and if you are using USB-RS232 adapter check the Com Port settings as described in step 3 on previous page

4. Parameter settings with NCDRIVE

- Parameter window opens automatically when you connect the inverter to your PC and choose ON-LINE
 - If you want to return to this window later on just click the parameter list icon as shown below
- In this window you can change the values of all parameters and they will be instantly transferred to the inverter you are connected to. Numerical values can be typed to the value area and multiple choice parameters have a drop down selection list.
- You can save your parameters into a file at any time from the file menu



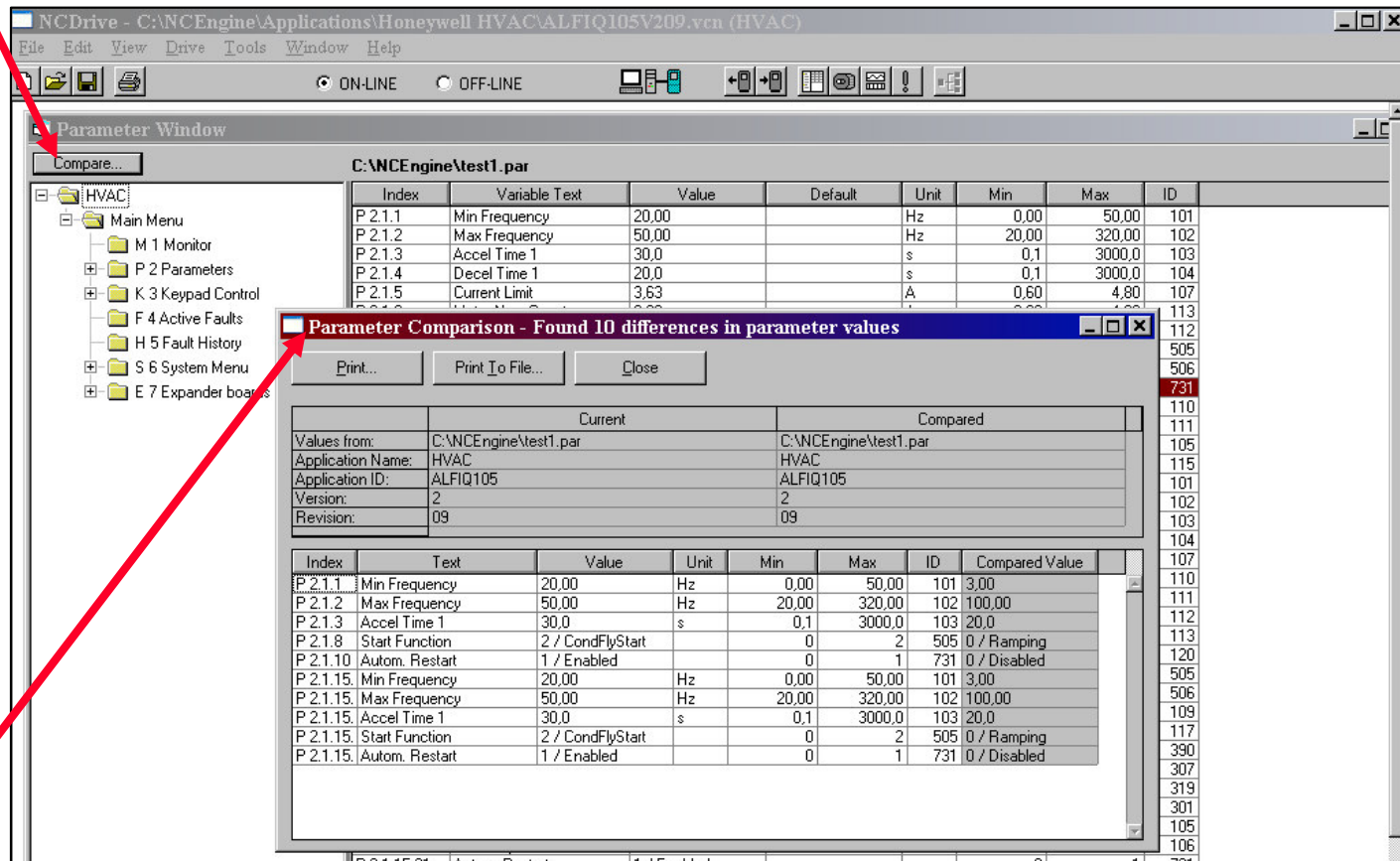
5. Creating parameter files without inverter

Creating parameter files without inverter – **OFF-LINE mode**

- For OFF-line mode you need a previously saved parameter file from the inverter type in question (NXL Compact, NXL HVAC or NXS)
- Parameter files can be opened from file menu
 1. Open the file and make your settings.
 2. Save the file
 3. This file can be then downloaded to the inverter with NCDRIVE by opening the file in ON-LINE mode

6. Comparing parameter settings

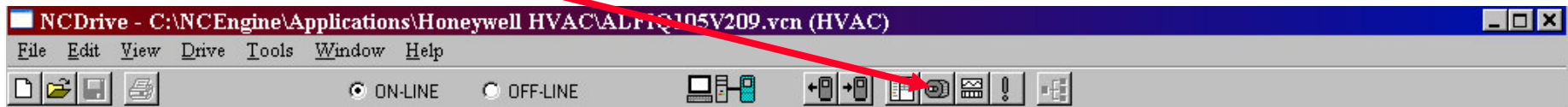
1. For comparing settings of 2 parameter files or the settings in the inverter connected to PC to a saved parameter file choose compare in the parameter window.



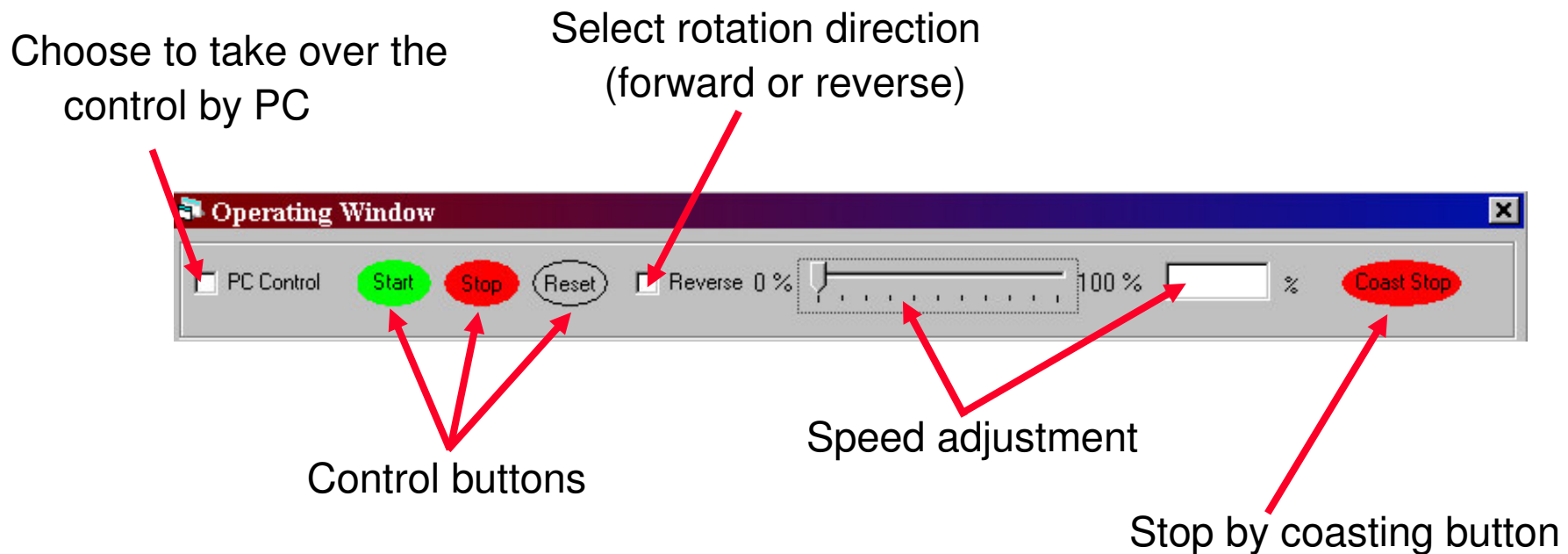
2. NCDRIVE will show all the differences with the 2 parameter settings.

7. Operating window

1. Click Operating window Icon



2. Control the motor



8. Monitoring window

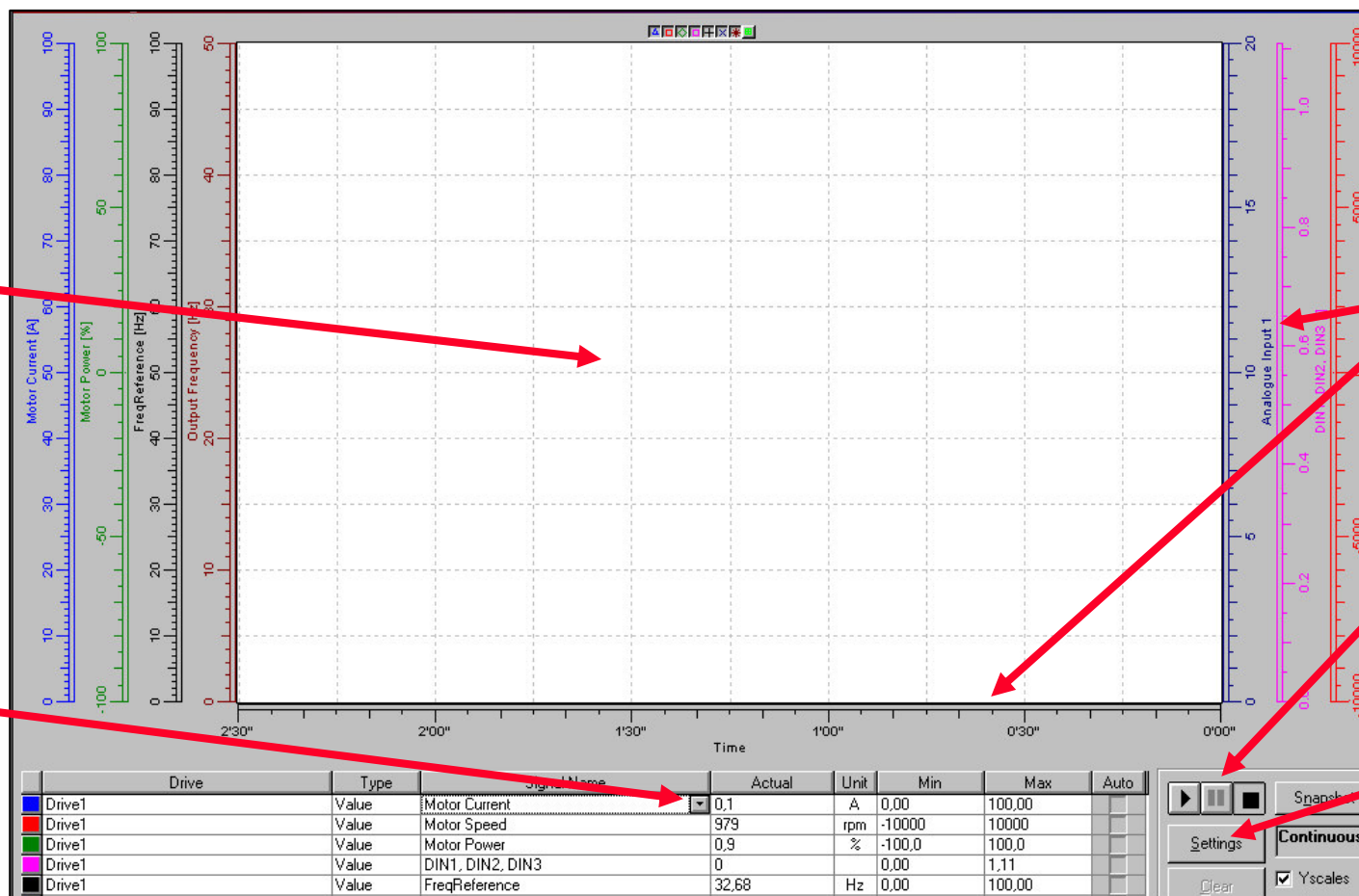
1. Click Monitoring window icon

NOTE! Also monitoring trend files can be saved



2. Monitor the measurement and functions of the inverter

ZOOM in by choosing the area with mouse
ZOOM out with right mouse button



Scales can be changed with mouse: hold left button and drag

Start, Stop or Pause monitoring

Sampling settings

Select the values to be monitored. Maximum 8 values

9. Diagnostics window for troubleshooting

1. Click Diagnostics window icon

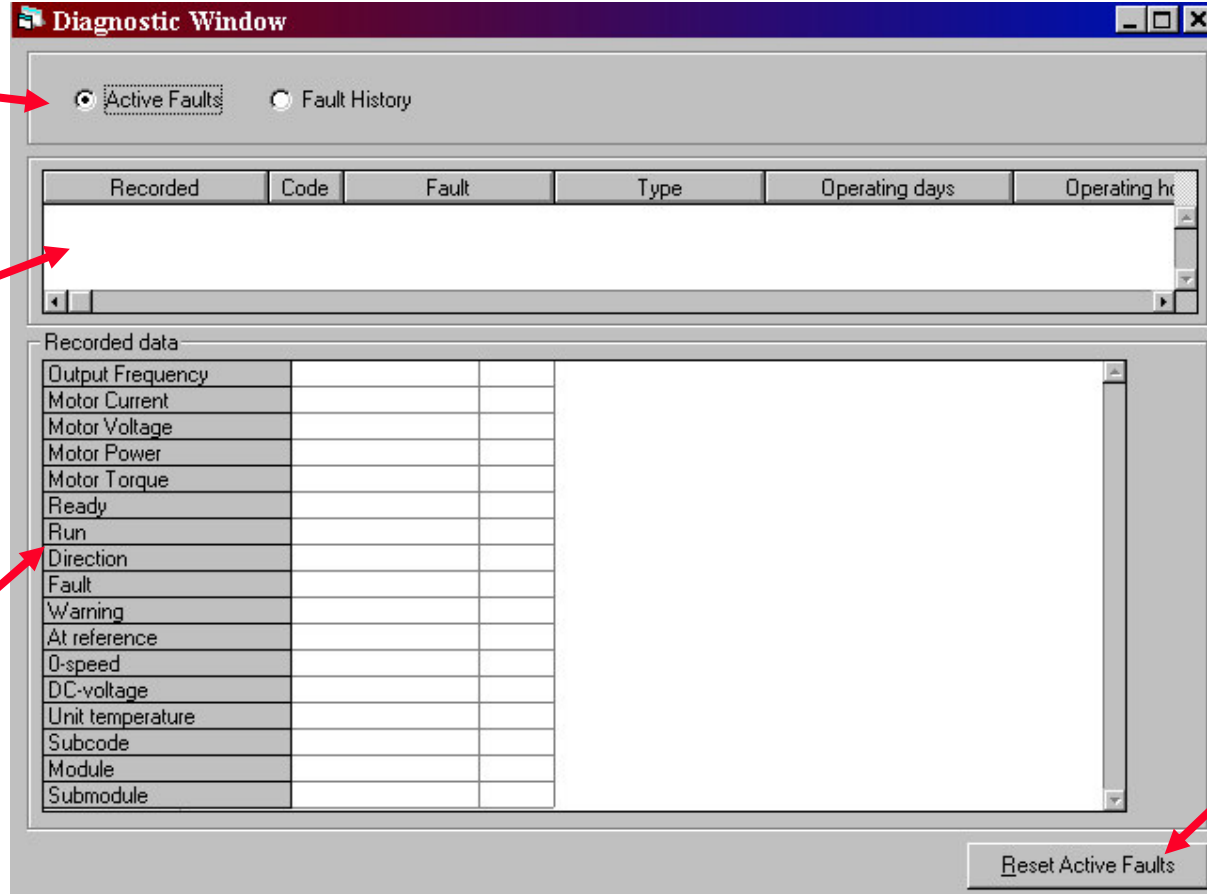


2. Check the inverter active faults and view fault history

View selection:
Active faults or
fault history

Information on
the fault

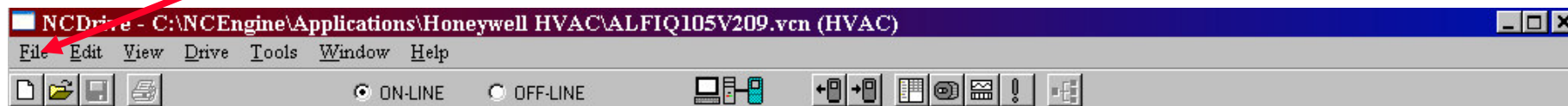
In NXS models
the inverter will
also store
measurement
values from the
fault tripping
moment. In NXL
models this is not
available



Reset active
faults or reset
fault history
depending in
which view
has been
chosen

10. Service info file

1. Choose “service info” from the file menu



2. NCDRIVE will create a text file containing information from the inverter:

- All parameter settings
- Software revision information
- Hardware revision and tracking information
- Information on connected option boards
- Fault history

Printed:	22.10.2010	13:37:11				
Serialnumber:	10419936					
Device:	NDL					
System software:	ALFIQ105V209	(15.57.2927)				
Firmware:	1.24					
Application:	ALFIQ105	(ALFIQ105V209.vcn, ALFIQ105 2.9)				
Parameter file:	Not Saved					

Index	Text	Value	Unit	Min	Max	ID
P 2.1.1.1	Min Frequency	20,00	Hz	0,00	50,00	101
P 2.1.1.2	Max Frequency	50,00	Hz	20,00	320,00	102
P 2.1.1.3	Accel Time 1	30,0	s	0,1	3000,0	103
P 2.1.1.4	Decel Time 1	20,0	s	0,1	3000,0	104
P 2.1.1.5	Current Limit	3,63	A	0,60	4,80	107
P 2.1.1.6	Motor Nom Currnt	3,30	A	0,60	4,80	113
P 2.1.1.7	Motor Nom Speed	1440	rpm	300	20000	112
P 2.1.1.8	Start Function	0 / Ramping		0	2	505
P 2.1.1.9	Stop Function	0 / Coasting		0	1	506
P 2.1.1.10	Autom. Restart	1 / Enabled		0	1	731
P 2.1.1.11	Motor Nom Volty	400	V	180	690	110
P 2.1.1.12	Motor Nom Freq	50,00	Hz	30,00	320,00	111
P 2.1.1.13	Preset Speed 1	10,00	Hz	0,00	50,00	105
P 2.1.1.14	Param Conceal	0 / All Visible		0	1	115

3. Service info file can be used e.g. as commissioning document or as feedback to the technical support in problem cases

Honeywell